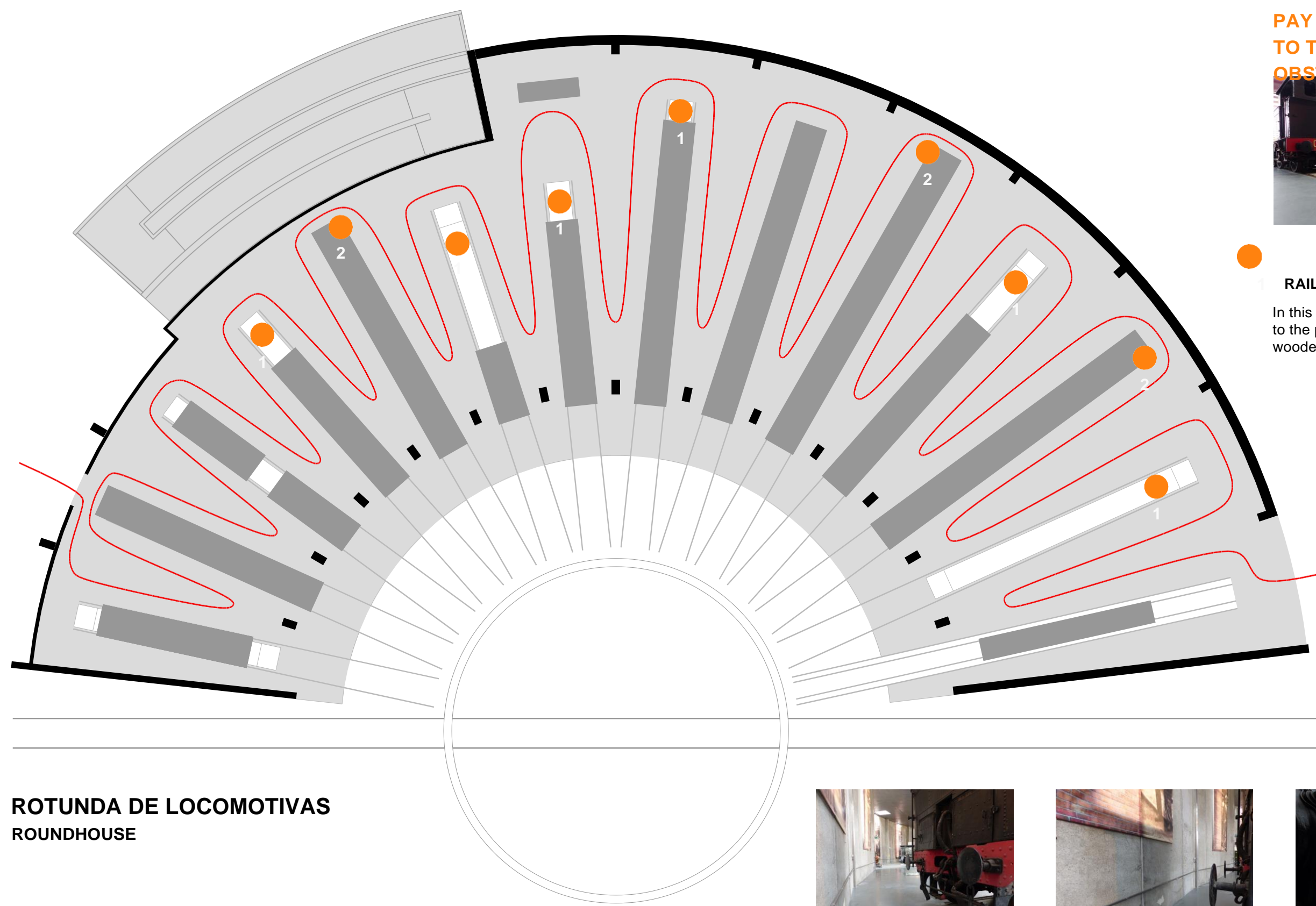


PAY ATTENTION TO THE OBSTACLES

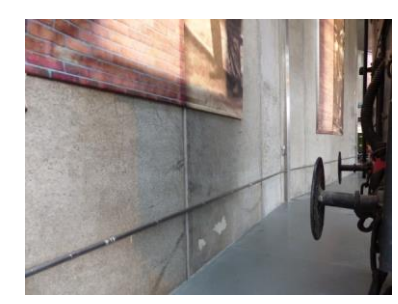
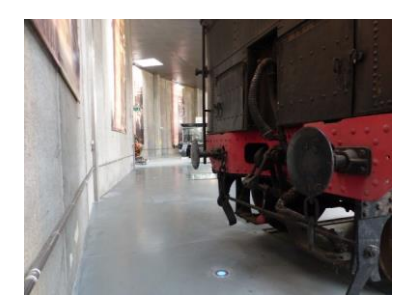


1 RAILS ON THE FLOOR

In this area, the floor is uneven due to the presence of built-in rails and wooden sleepers.



**ROTUNDA DE LOCOMOTIVAS
ROUNDHOUSE**



2 BUFFER STOPS

When going around the locomotives you should pay special attention to the buffer stops protruding from their ends



MUSEU NACIONAL FERROVIÁRIO
PERCURSO ACESSÍVEL ACCESSIBLE WAY