

# MUSEU NACIONAL FERROVIÁRIO

## EVENT VENUES



## » Rooms and Indoor Spaces

### OFICINAS DO VAPOR (STEAM WORKSHOPS)

**Area – 3000 m<sup>2</sup>**

Large Industrial Areas of the Old Steam Workshops dated 1907

Room with direct access to the outdoor areas of the Museum Complex

Ideal for hosting shows, dinners, corporate and business events, conferences or seminars.

Some vehicles can be moved depending on the needs and purpose of each event.

Can accommodate **2500 people sitting** (including catering area simultaneously).

Audiovisual material, decoration and catering service not included.

Two (2) 32-amp outlets and one (1) 64-amp outlet.



Old Steam Workshops  
Overall view

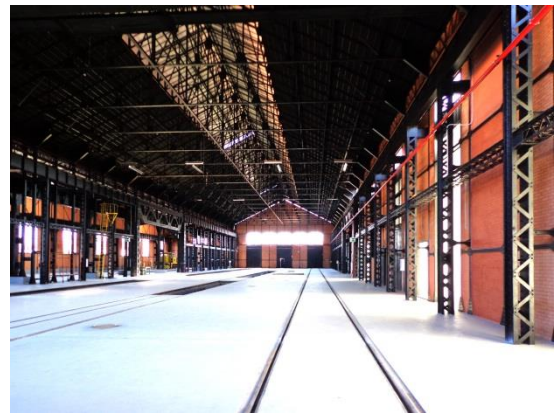




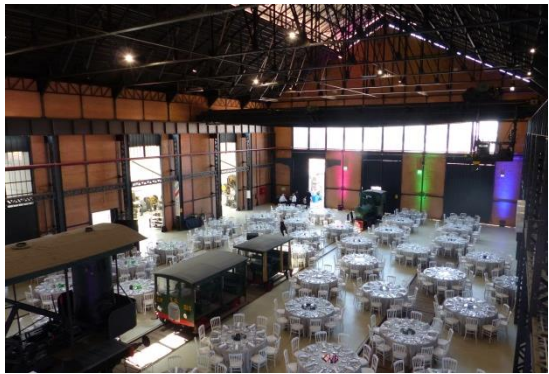
Old Steam Workshops  
Overall view



Old Steam Workshops  
Overall view



Old Steam Workshops  
Overall view sem veículos



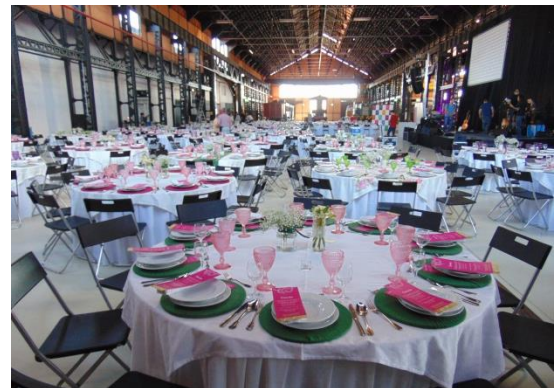
Old Steam Workshops  
Lunch – Corporate event



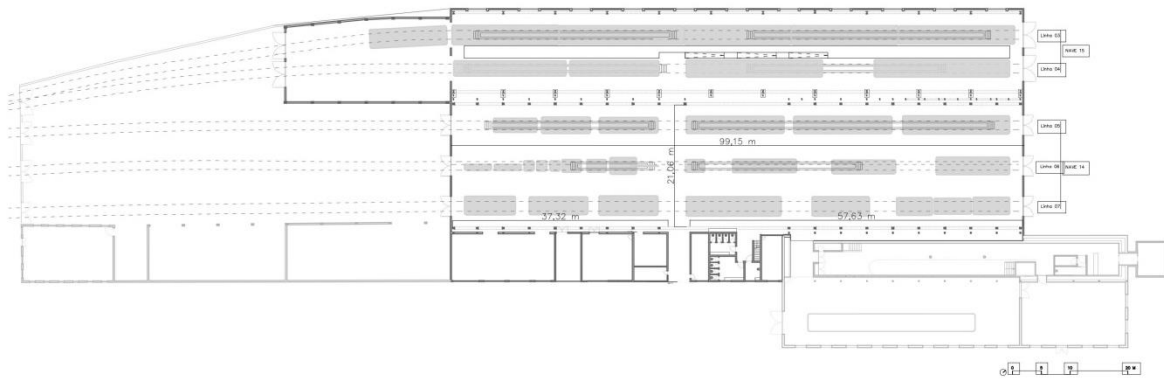
Old Steam Workshops  
Corporate event



Old Steam Workshops  
Show



Old Steam Workshops  
Lunch – Corporate event



Wings 14 and 15  
Floor plan

## LIGHT ROOM

**Area - 190m<sup>2</sup>**

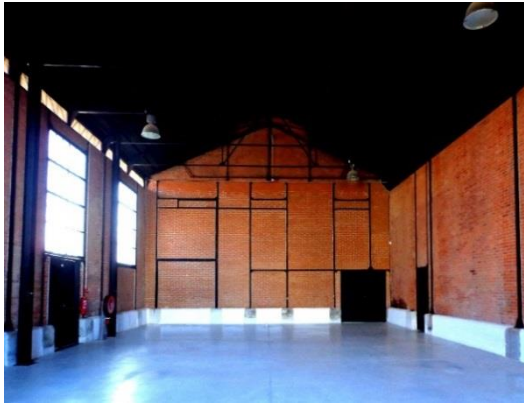
Room with direct access to the outdoor areas of the Museum Complex.

Ideal for hosting shows, conferences or seminars.

Can accommodate **100 people sitting**.

Audiovisual material, decoration and catering service not included.

Several 220-volt outlets;



Light Room  
Overall view

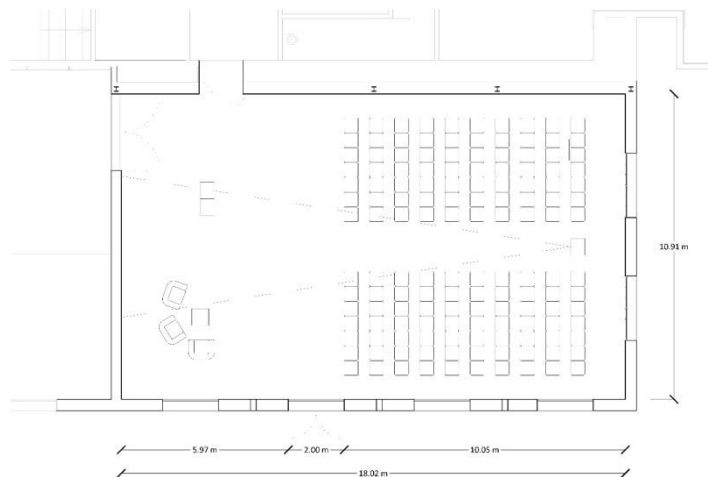




Light Room  
Lounge



Light Room  
Stage Performance



Light Room  
Floor plan

## ROYAL TRAIN ROOM

**Area - 200m<sup>2</sup> (36.5mt x 5.5mt)**

Direct access to the outdoor areas of the Museum Complex.

It houses most treasured items of the MNF collection: Locomotive "D.Luiz" (Nº1), "Queen Maria Pia's Car", "Prince Carlos' Car".

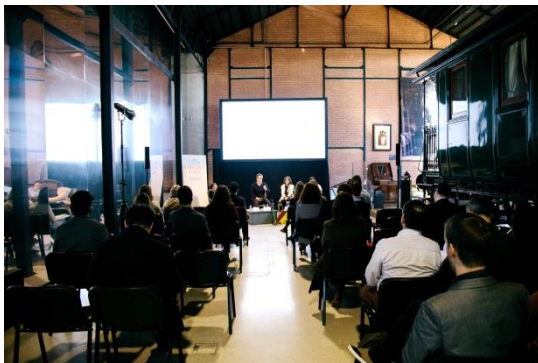
Can accommodate 180 people sitting.

Audiovisual material, decoration and catering service not included.

Several 220-volt outlets.



Royal Train Room  
Overall view



Royal Train Room  
Symposium



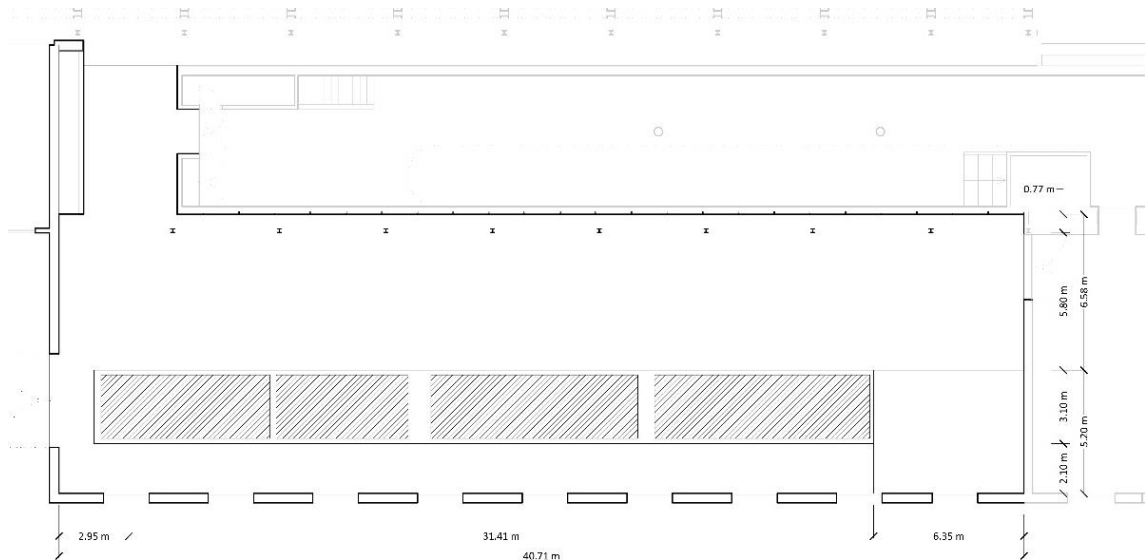
Royal Train Room  
Dinner



Royal Train Room  
Show



Royal Train Room  
Seminar



Royal Train Room  
Floor plan

## TEMPORARY EXHIBITION ROOM

### Area – 70 m<sup>2</sup>

Room located in the Consumables Warehouse, next to the cafeteria, reception and MNF store.

Can accommodate 25 people sitting or other adaptable solutions.

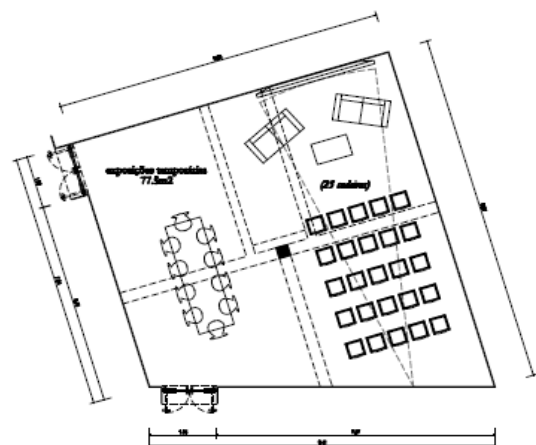
Direct access to the outdoor areas of the Museum Complex and public parking.

Audiovisual material, decoration and catering service not included.

Several 220-volt outlets.



Temporary Exhibition Room  
Indoor view



Temporary Exhibition Room  
Floor plan



## SUPPORT ROOM – OLD STEAM WORKSHOPS

**Area – 56m<sup>2</sup>**

Room next to the exhibition area of the rolling stock collection.

Ideal for hosting meetings, book-signing events, exhibitions.

Can accommodate 20 people sitting.



Support Room  
Indoor view

## COUNCIL ROOM

**Area – 60 m<sup>2</sup>**

Room at the headquarters of the Fundação Museu Nacional Ferroviário, in the Museum Complex.

Ideal for hosting meetings, book-signing events, conferences, training activities.

Can accommodate 25 people sitting in audience, plus a table with 8 seats.

Other layout possibilities, according to each event needs.

Screen and projector included.

Availability: 25 chairs;

Decoration and catering service not included.

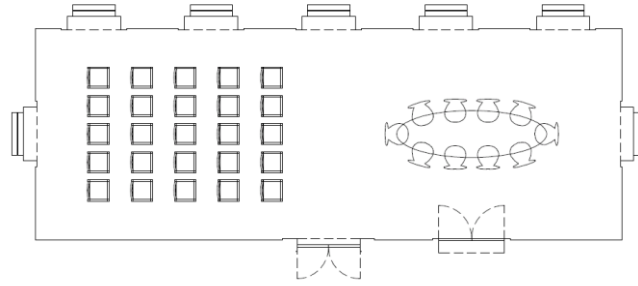
220-volt outlets.



Council Room  
Indoor View



Council Room  
Floor plan



## Outdoor Spaces

### ROUNDHOUSE

Our outdoor spaces are the ideal setting for concerts, cocktails, fashion shows or product promotion.

Audiovisual material, decoration and catering service not included.

Several 220-volt outlets.



Roundhouse  
Overall view



Roundhouse  
Overall view



Roundhouse  
Show

Roundhouse  
Wedding cocktail party

As a complement to the support of activities, tents can be set up outdoors for the most diverse purposes (reception of guests, catering support, fashion shows ...).





Outdoor space next to the Old Steam Workshops  
Overall view



Outdoor space next to the Roundhouse  
Overall view



Outdoor space next to the Consumables Warehouse  
Overall view



Outdoor space next to the Old Steam Workshops  
Lounge – Welcome Drink



Outdoor space next to the Old Steam Workshops  
Welcome Coffee

## » Historical Coach Cars

### PRESIDENTIAL TRAIN

Used by Heads of State and their Retinue between 1910 and 1970. It has been fully restored, and is one of the trains that can be adapted as a stage in cinematographic productions or in the production of other theatre or music shows. The lounges can be used as meeting rooms.



Presidential Train  
External view





Retinue and Security Car  
Lounge



Retinue and Security Car  
Cabin



Ministers' Car  
Lounge



Journalists' Car  
Cabin

## SUPPORT SERVICES

The Dining Car of the Presidential Train has its own space, which can be used for Catering services - light meals (pre-cooked) or coffee break.



Dining Car  
Dining Parlour



Dining Car  
Dining Parlour



Dining Car  
Kitchen



Head of State's Car  
Kitchen

## MOVIE THEATRE CAR



Movie Theatre Car  
External view

40 seats available.

Screen and projector included.

Decoration and catering service not included.





Movie Theatre Car  
Interior



Movie Theatre Car  
Interior

## DINING CARS

Three cars. Each car can accommodate 40 people sitting. Total capacity: 120 seats

Audiovisual material, decoration and catering service not included.



Dining Car



Dining Car  
Interior

## FIRST CLASS SLEEPER – 19<sup>TH</sup> CENTURY



Car Asf 1  
Outdoor view





## DRIVER'S COMPARTMENT – 19<sup>TH</sup> CENTURY



Car S' 12  
Outdoor view

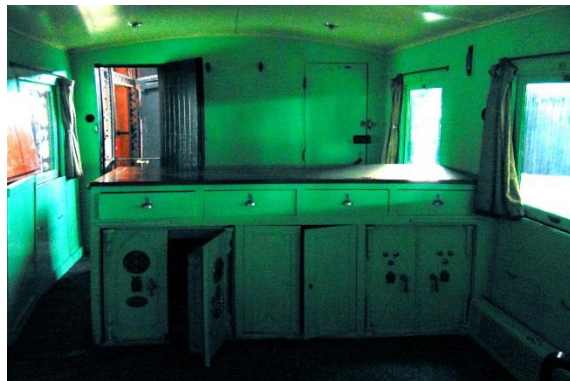


Car S' 12  
Indoor view

## MONEY TRAIN CAR – 19<sup>TH</sup> CENTURY



Car S3003  
Outdoor view



Car S3003  
Indoor view

## MEDICAL CARE CAR – 1888

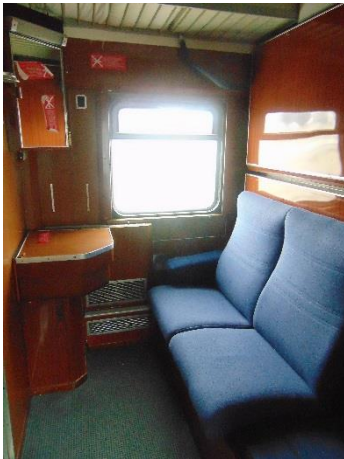


Car S92  
Outdoor view



Car S92  
Indoor view

## SUD-EXPRESS TRAIN – 19<sup>TH</sup> CENTURY



Couchette Car  
Cabin



Couchette Car  
Corridor



Couchette Car  
Eating area



Dining Car  
Kitchen



Dining Car  
Kitchen



Dining Car - Lounge

